

REGIONE PIEMONTE

PROVINCIA DI CUNEO

COMUNE DI POLONGHERA
COMUNE DI FAULE

NUOVA SCUOLA
ELEMENTARE
INTERCOMUNALE

PROGETTO ESECUTIVO

PROGETTO:
STRUTTURE IN C.A.
SOTTOTETTO

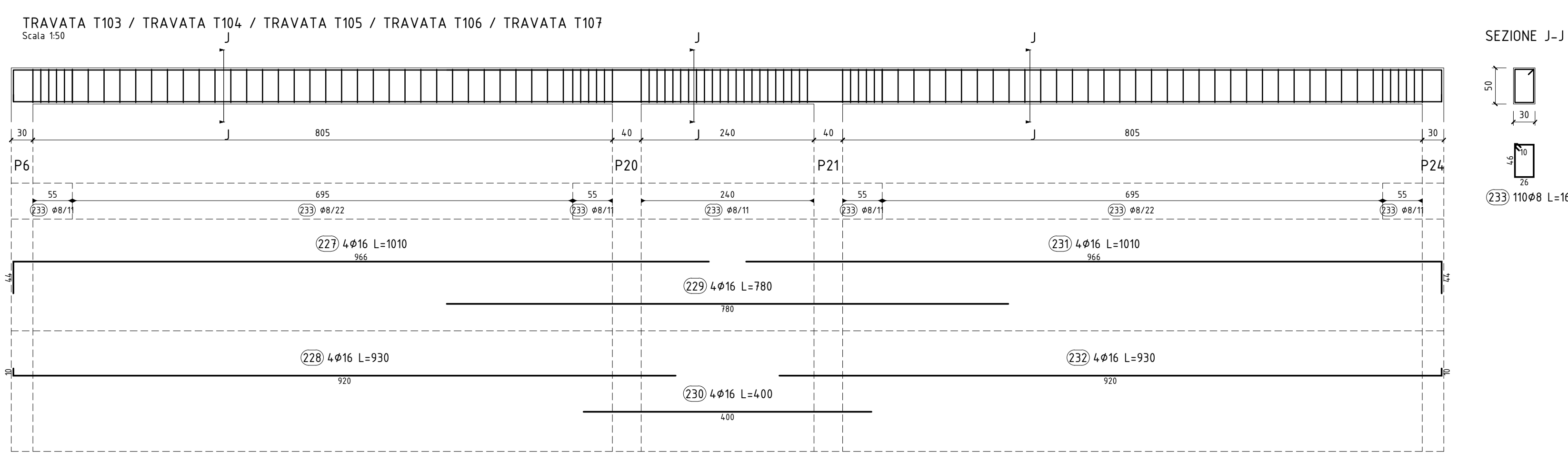
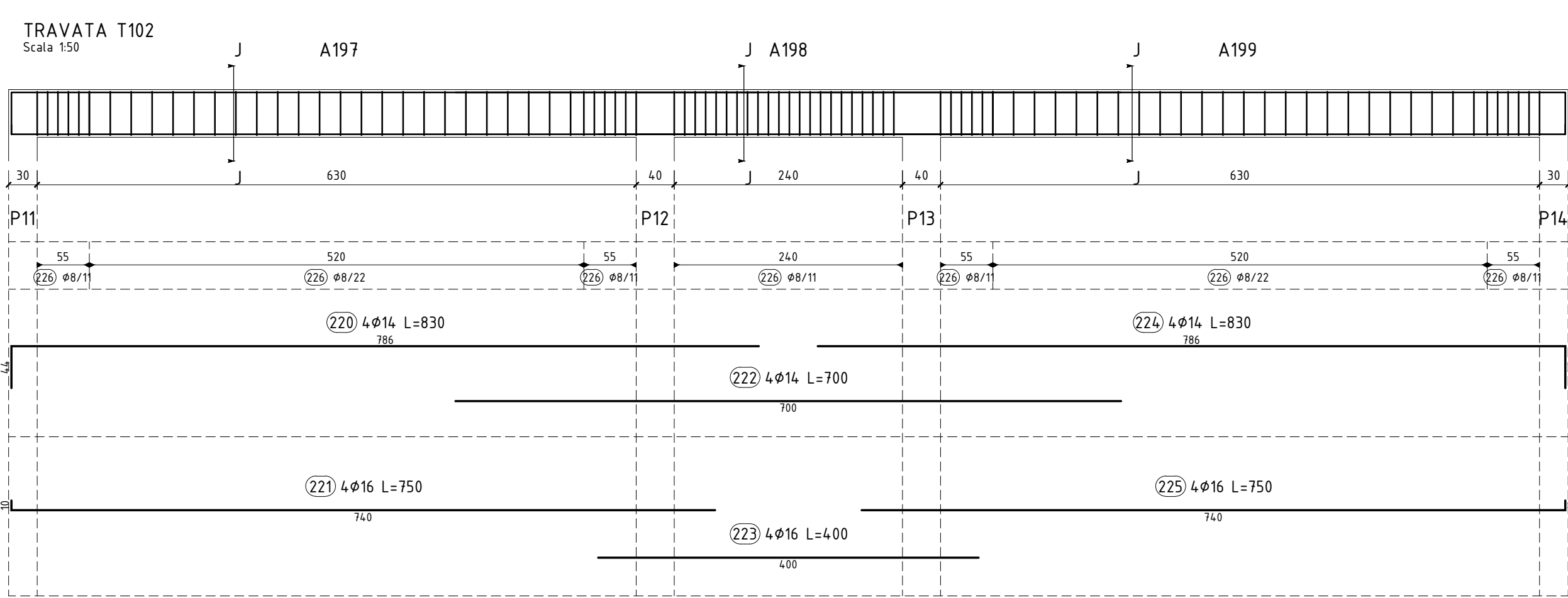
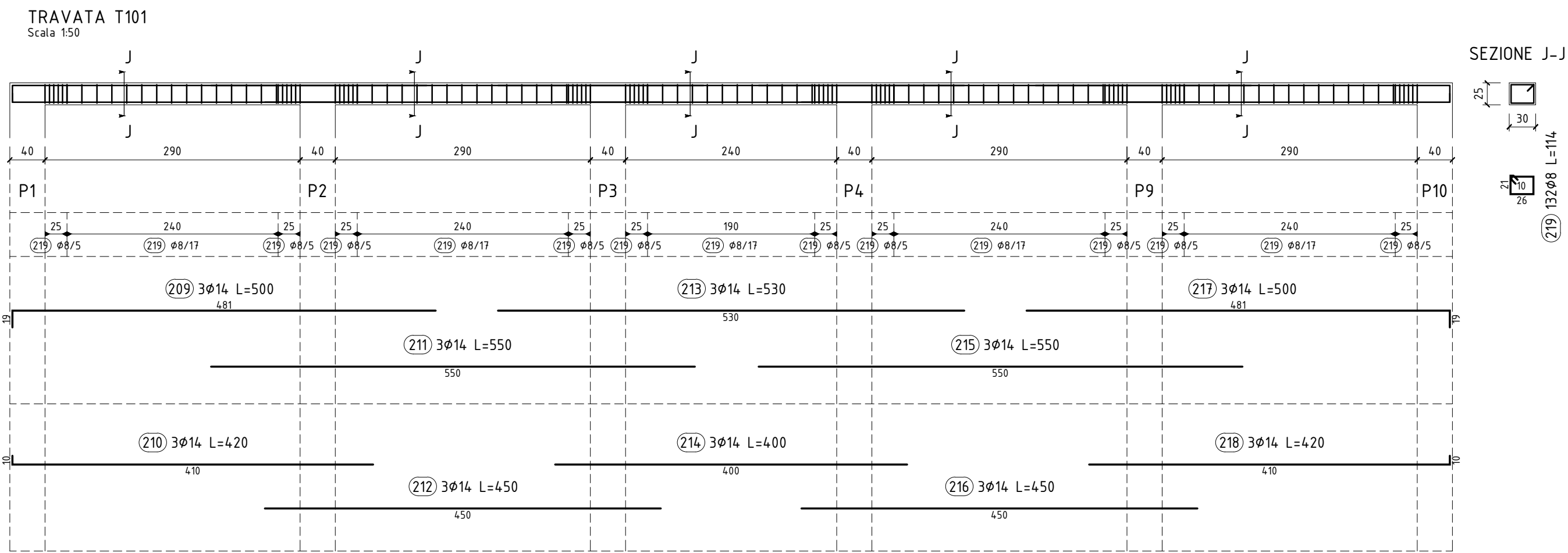
scala 1:50

TAV. C17 B2

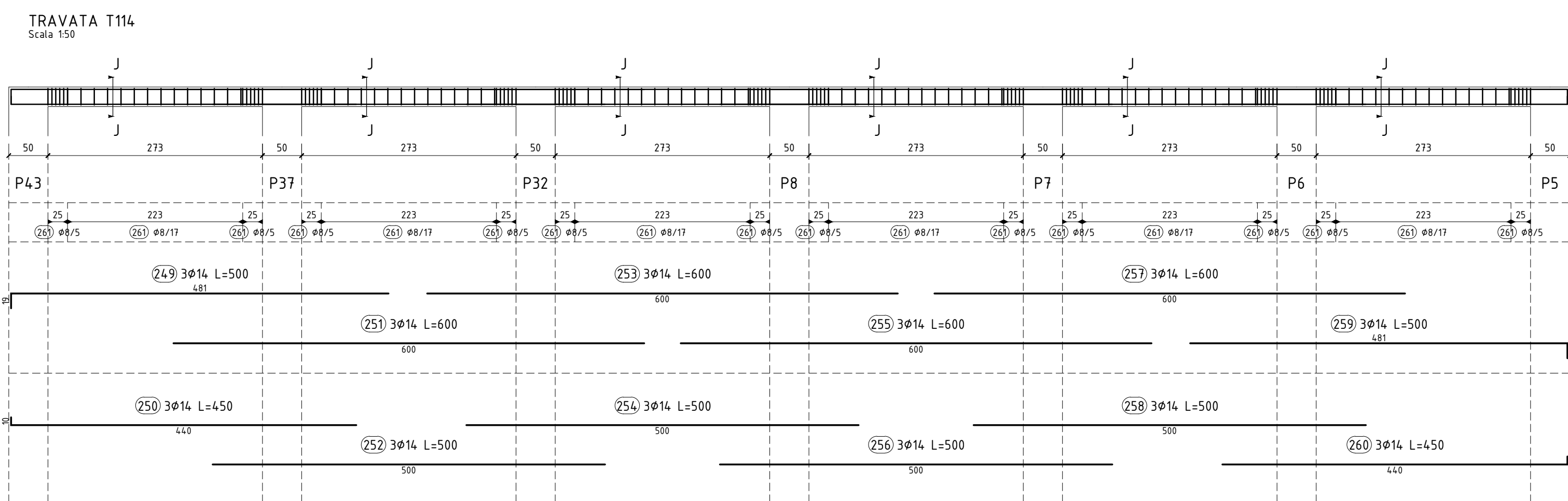
D17_012_C17 B2

Arch. Fulvio BACHIORRINI
p.ta San Nicola 3 - SALUZZO
tel.fax 0175/46375

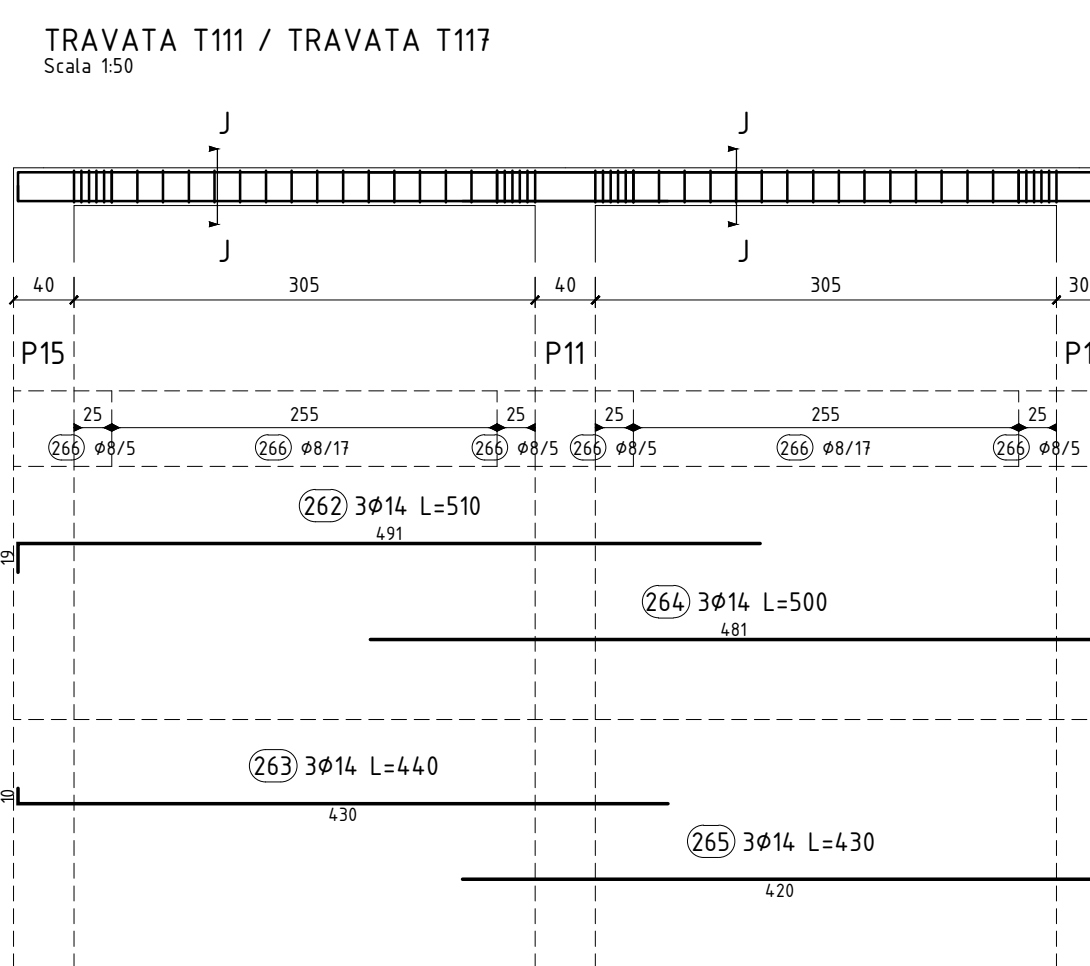
Coll.:
Ing. Carlo CHABRANDO
Via Motta 2 - BIELLA
tel. 0165/909154



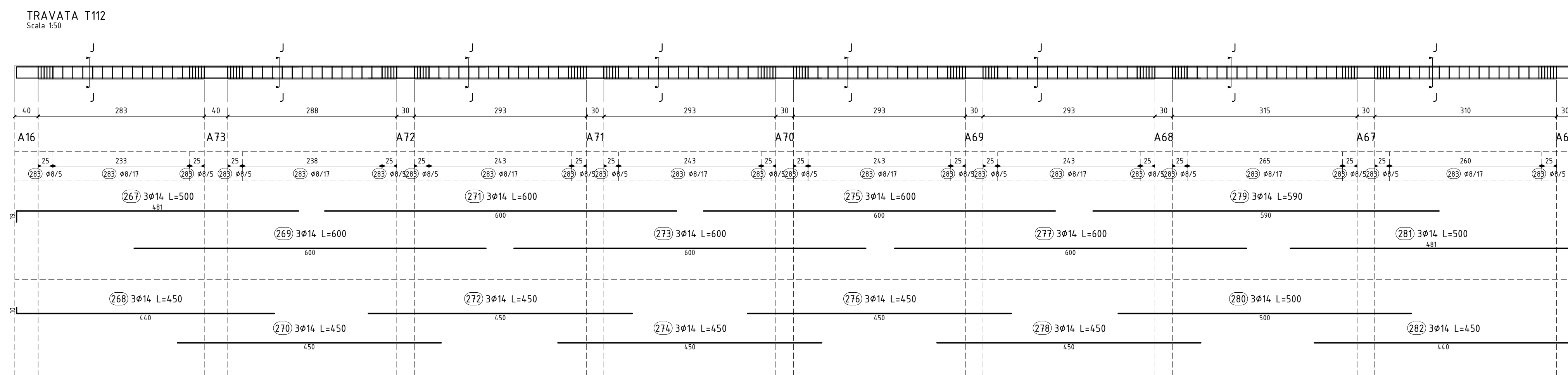
SEZIONE J-J



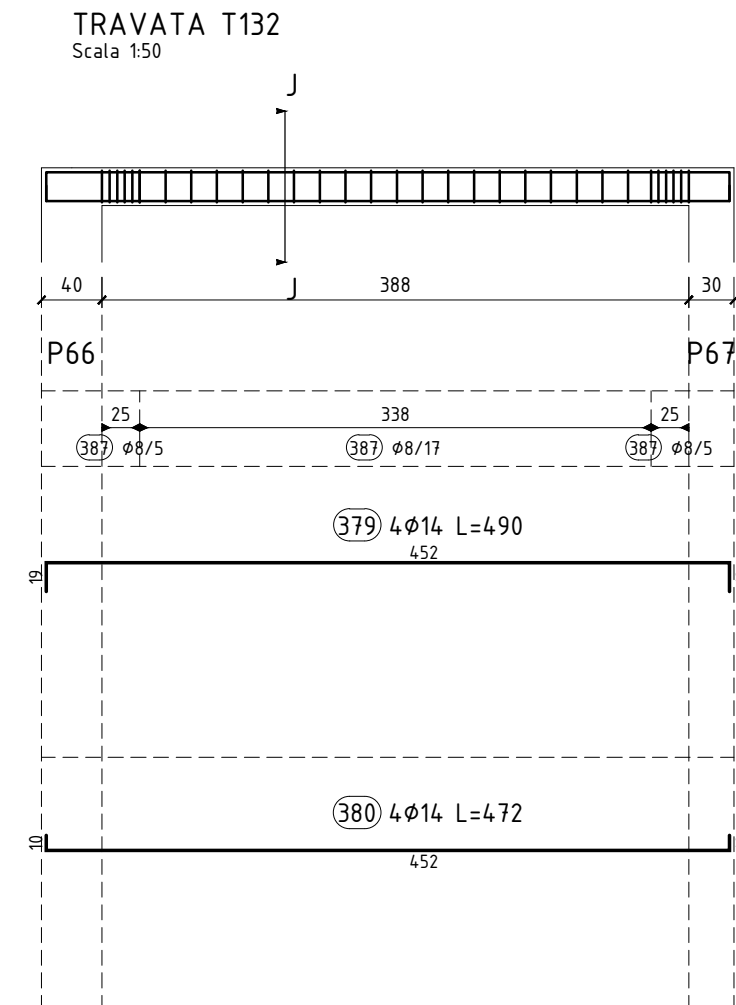
SEZIONE J-J



SEZIONE J-J



SEZIONE J-J



SEZIONE J-J

